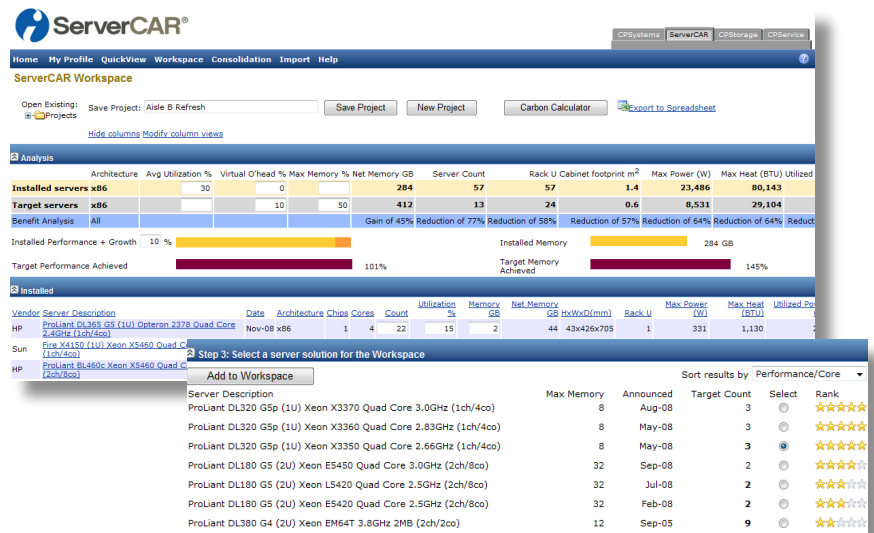




A server consolidation planning tool that quantifies footprint, energy, and carbon emissions savings, while accelerating project timelines with greater accuracy.



### Used for:

- » Analyzing server consolidation scenarios
- » Planning server power requirements
- » Performing what-if analysis on potential prospect/client solutions
- » Quantifying the benefits of server refresh projects with clients and/or prospects
- » Establishing chargeback algorithms according to standardized ratings
- » Scoping the size of potential projects

### Used by:

- » Pre-Sales Consultants
- » Solution Architects
- » IT Architects
- » Performance Planners
- » Business Planners
- » Datacenter Management



	Features	Benefits
<b>Powered by RPE2 Server Performance Estimate</b>	Compare servers more accurately with tools powered by the industry-recognized RPE2 Server Performance Estimate.	A comprehensive and common performance measure enables speedier and more accurate server consolidation analysis.
<b>Comprehensive Historical Database</b>	Gain access to a database of over 20,000 unique server configurations, each with environmental, energy, and memory perspectives.	Create better, more accurate plans while saving time too.
<b>Smart Import</b>	Import your server inventory for use in ServerCAR consolidation analysis.	The majority of the time spent in planning a server consolidation project is consumed by gathering, cleansing, and entering asset data into a planning and analysis tool. Smart Import dramatically streamlines this time-consuming process, offering productivity gains in the range of four to tenfold.
<b>Server Consolidation Analysis Tool</b>	Plan detailed server consolidation projects quickly and easily by: <ul style="list-style-type: none"> <li>» Assessing your current server inventory</li> <li>» Modeling potential replacement server outcomes</li> <li>» Conducting what-if analyses on multiple scenarios</li> <li>» Quantifying savings in terms of numbers of servers, physical space, and power and cooling</li> </ul>	Explore more options in less time and generate more accurate outcomes.
<b>Carbon Calculator</b>	See the benefits of your consolidation project summarized in terms of annualized electricity savings, CO <sub>2</sub> e reductions, and carbon footprint reductions.	Instantly quantify environmental savings according to your datacenter location. The Carbon Calculator leverages a comprehensive database of location-specific cost and conversion factors, enabling analysis by country – and even by US state.

Using independent data to justify a course of action will help you accelerate your project timeline, and in turn, your consulting sales cycle.

	Features	Benefits
<b>Target Server Wizard</b>	Be guided to the best server and configuration options with a five-star ranking feature, based on your customized requirements.	Evaluate multiple potential solutions in less time, including solutions you may not have otherwise considered – even within your set of preferred vendors' products.
<b>QuickView</b>	Lookup details for individual server configurations, including power consumption, heat dissipation, physical dimensions, and weight.	Quickly find specific server configuration details without engaging the full server consolidation analysis tool. This feature is very convenient when you only need to confirm the environmental details for a couple of configurations.
<b>Save and Share</b>	Save multiple projects and analyses. Share outcomes with colleagues.	The ability to easily save, recall, and share outcomes makes ServerCAR an ideal collaboration tool for server consolidation project teams.
<b>Summary Report</b>	Generate a high-level pictorial report that summarizes “before and after” outcomes.	Strengthen your sales proposals by legitimizing proposed outcomes and recommendations with data from an independent source.

With comprehensive tools, you can quickly deliver more optimized recommendations to your clients.

Over 20,000 featured x86, RISC, and IA-64 server configurations dating as far back as 1995.

### Featured Vendors

- » Cisco
- » Dell
- » Fujitsu
- » HP
- » IBM
- » Oracle
- » Sun



### About Ideas International

Ideas International (IDEAS, ASX:IDE) is the leading global supplier of comparative intelligence on enterprise IT infrastructure. Servicing both IT vendors and large-scale IT users, IDEAS products focus on: servers; storage; virtualization and consolidation; and software and infrastructure services.

IDEAS online products are backed up by expert industry analysts who can also deliver specialized advisory and consulting services.

For more information about Ideas International, please visit:

[www.ideasinternational.com](http://www.ideasinternational.com)



### Americas

Ideas International, Inc.  
800 Westchester Avenue  
Suite N337  
Rye Brook, NY 10573-1354  
USA

Tel +1 914 937 4302  
Fax +1 914 937 2485

### Asia/Pacific

Ideas International Asia-Pacific Pty Ltd  
Level 3  
20 George Street  
Hornsby, NSW 2077  
Australia

Tel +61 2 9472 7777  
Fax +61 2 9472 7788

### Europe, Middle East, Africa

Ideas International (EMEA) Limited  
Milton Park Innovation Centre  
99 Milton Park  
Abingdon, Oxon OX14 4RY  
United Kingdom

Tel +44 (0) 1235 841 510  
Fax +44 (0) 1235 841 511